



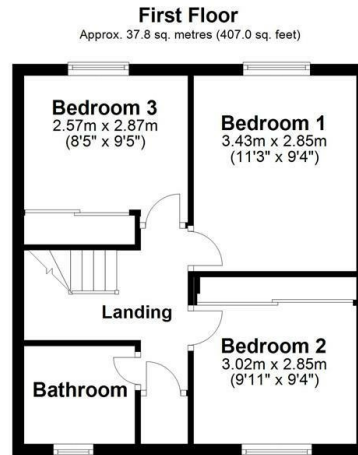
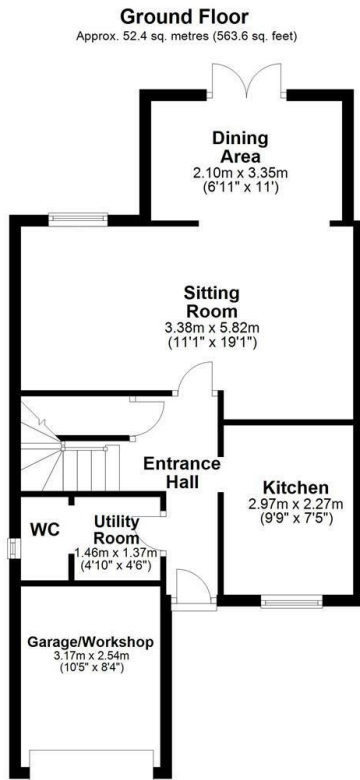
JAMIE WARNER
— ESTATE AGENTS —



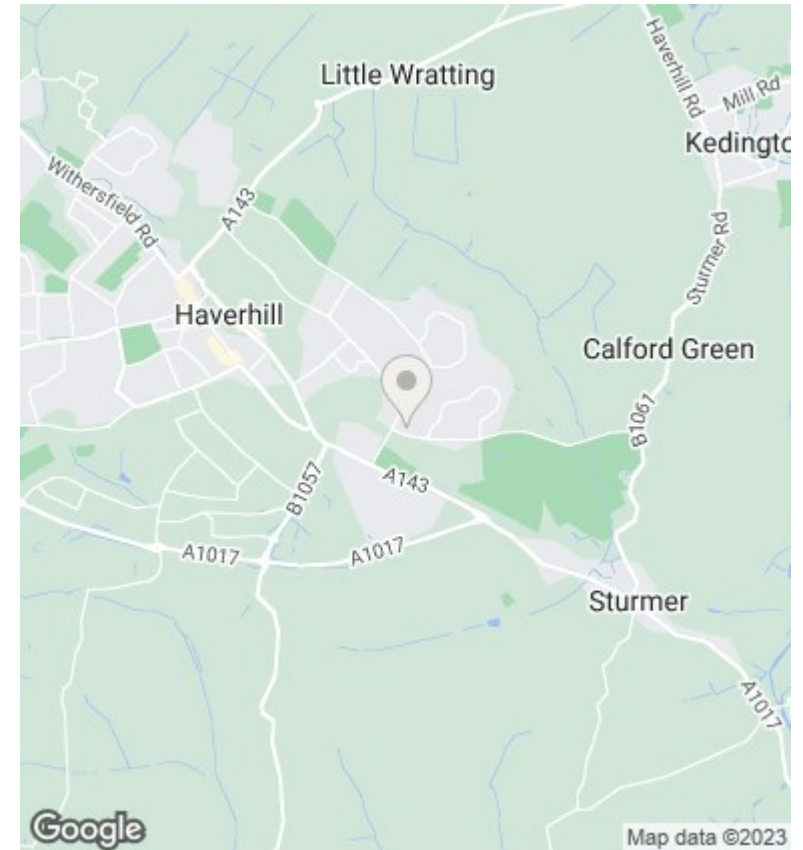
17 Weddell Road, Haverhill, CB9 0LE

Guide Price £330,000

- Three Double Bedrooms
- Utility Room & WC
- Outdoor Covered Entertaining Area
- Sitting/Dining Room
- Modern Bathroom Suite
- Garage/Workshop & Off-Road Parking
- Stunning Kitchen
- South-Facing Rear Garden



Total area: approx. 90.2 sq. metres (970.5 sq. feet)



Directions

Viewings

Viewings by arrangement only. Call 01440 712221 to make an appointment.

Council Tax Band

EPC Rating:

| Energy Efficiency Rating | | |
|--|----------------------------|-----------|
| | Current | Potential |
| <i>Very energy efficient - lower running costs</i> | | |
| (92 plus) A | | |
| (81-91) B | | |
| (69-80) C | | |
| (55-68) D | | |
| (39-54) E | | |
| (21-38) F | | |
| (1-20) G | | |
| <i>Not energy efficient - higher running costs</i> | | |
| England & Wales | EU Directive 2002/91/EC | |